

Panels

Are you searching for better solutions? We solve it for you!

Multi-Controllers “MC” Constructed and configured individually – to your priorities.

These miniature indication boards are especially developed for utility vehicles and can replace different single indication instruments.

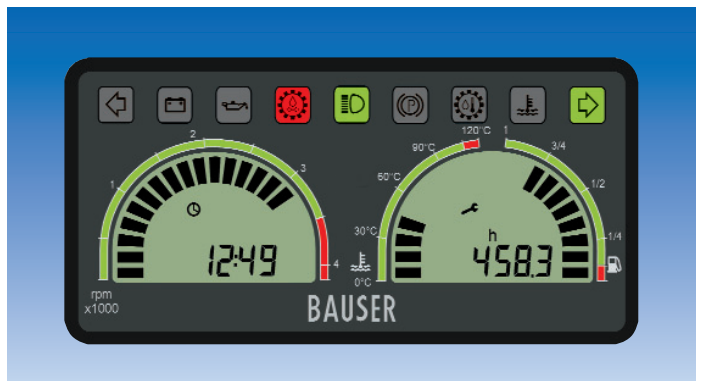
- In one view you can see all required data:
i.e. operating hours, programmable service intervals, real time clock, battery voltage, temperature, fuel level, pressure, revolution per minute or kilometre indication, different warning and control signals.
- All this information in only one unit – a miniature unit. Because the BAUSER MCs come in housing size of only: 100 x 50 mm or 56 mm diameter.
- Multi-Controllers with an “oval” front plate are possible examples of customised solutions, with front dimensions of approx. 190 x 130 mm.
- But with a large, back lighted display, so that you can comfortably read all the vehicle operating parameters. Different display variants as multi bar and digital indication are realisable.
- The data from the Multi-Controllers are available from analogue measuring inputs or optionally through a data interface CAN (SAEJ1939, CAN open).
- The MCs can be delivered with or without a front push button to visualise further data on the display or to acknowledge or configure service values. The configuration is factory set or effected by the customer via a serial interface.



Type 806





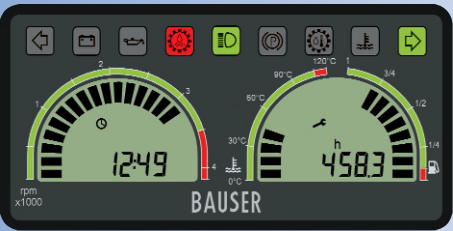
Type 808 - with a display with or without front push buttons



Type 808.2 - with 2 displays, without front push buttons, example of configuration: rpm, real time clock, temperature, fuel level, time and service counter.

Panels

Are you searching for better solutions? We solve it for you!

Type	MC	Indication / function	Housing
	806	<p>LC-Display with 10-multi bar segments, 6-digit 7-segment indication, several icons with back light</p> <p>up to 3 signal lamps, 2 to be supplied externally</p> <p>connections: 8 or 10 pole Molex Minifit</p> <p>2 analogue inputs</p>	<p>black plastic</p> <p>front dimensions: Ø 56 mm</p> <p>cutout: Ø 52 mm</p> <p>mounting depth: 45 mm</p>
	808	<p>LC-Display with maximum 21-multi bar segments, which can be used for 1, 2, 3 or 4 single multi bar indications</p> <p>6-digit 7-segment indication, several icons</p> <p>up to 10 signal inputs, 6 to be supplied externally, with or without 2 front push buttons.</p> <p>connections: 8 or 10 pole Molex Minifit or waterproof AMP-connector</p> <p>3 analogue inputs</p>	<p>black plastic</p> <p>front dimensions: 100mm x 50mm</p> <p>cutout: 92 mm x 45 mm or 96 mm x 46 mm</p> <p>mounting depth: 40 mm</p>
	808.2	<p>Two LC-Displays with maximum 21-multi bar segments for each, which can be used for 1, 2, 3 or 4 single multi bar indications</p> <p>6-digit 7-segment indication, several icons</p> <p>up to 9 signal inputs, 6 to be supplied externally,</p> <p>without front push buttons</p> <p>connections: 8 or 10 pole Molex Minifit or waterproof AMP-connector</p> <p>3 analogue inputs</p>	<p>black plastic</p> <p>front dimensions: 100mm x 50mm</p> <p>cutout: 92 mm x 45 mm or 96 mm x 46 mm</p> <p>mounting depth: 40 mm</p>

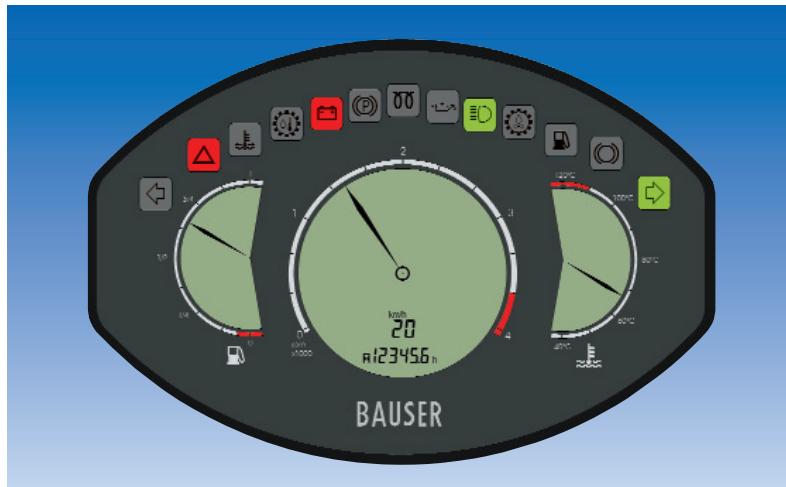
Options:

- indication instrument for CAN (SAEJ1939, CAN open).
- factory set configuration via serial interface or via two front push buttons.
Release of input through PIN.
- with the front push buttons further data could be visualised on the display or service values acknowledged.

Panels

Are you searching for better solutions? We solve it for you!

Individual solutions:



Examples of realisable variants



Benefits and advantages

- The miniature panels can be easily and rapidly mounted. Therefore you save a lot of time and money.
- With prompt maintenance intervals and permanent controls of the single functions, the operating time of your vehicle could demonstrably be prolonged.
- The new BAUSER MCs support you in checking and controlling your vehicle functions and offer a new look for your cockpit.

Individual solutions

- Select between different standard types or choose a customised solution. As the BAUSER Multi-Controllers can be developed according to your priorities.
- This is possible due to our proven microprocessor – or ASIC-technology and to our decades of development experience in the field of electronics, electro-technique and software engineering.

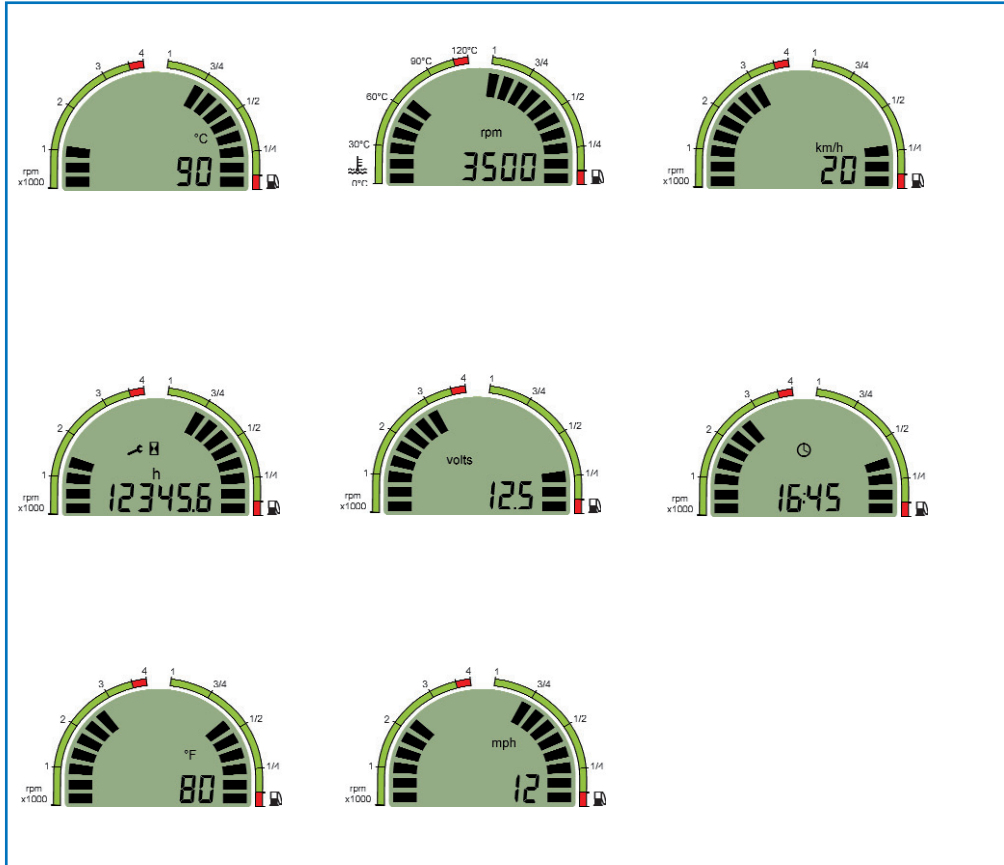
Quality and safety

- Our DIN EN ISO 9001:2000-certificated Company guarantees you a constant high quality – in all sectors.

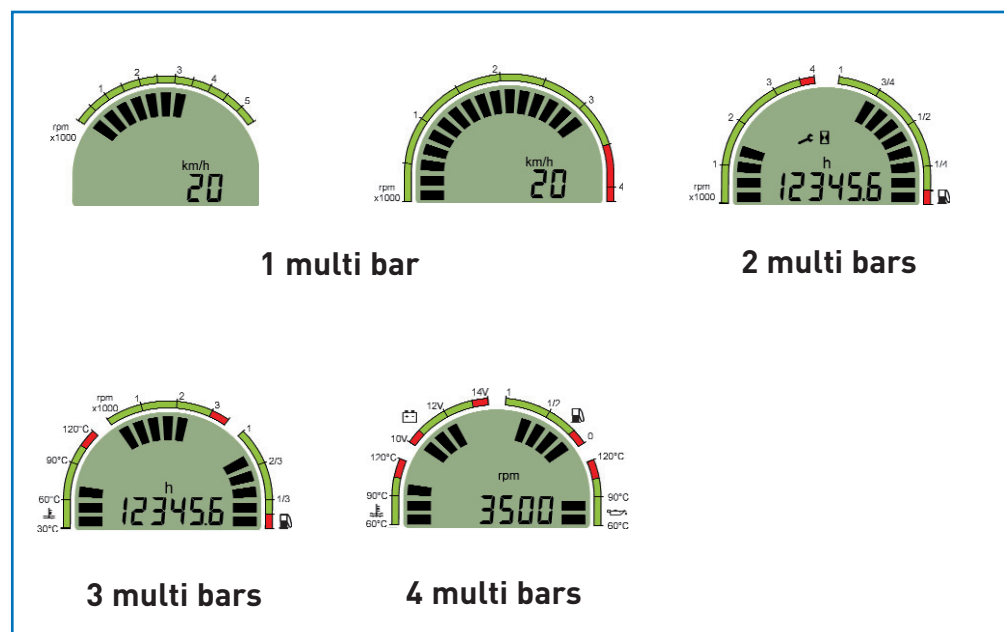
Panels

Are you searching for better solutions? We solve it for you!

Different display variants – configurable multi bar and 7-segment indications with respective icons.



LC-Displays with a maximum 21-segment multi bar indication, which could be used for 1, 2, 3 or 4 single multi bar indications:



Panels

Are you searching for better solutions? We solve it for you!

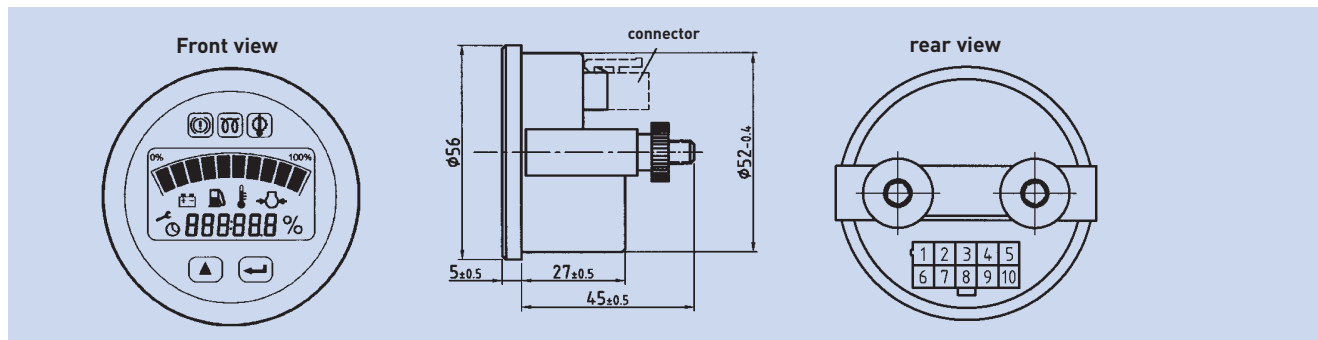
Technical specifications:

Type	806	808, 808.x
Housing	Black plastic	Black plastic
LC-Display:	10 multi bar segments, 6-digit 7-segment indication, with back light, indication of battery voltage, fuel level, temperature, pressure, rpm, operating hours (max. 99999,9h), service hours (max. 9999h), real time clock (adjustable)	1 or 2 LC-Displays with max. 21-multi bar segments, which can be used for 1,2,3 or 4 single multi bar indications, 6-digit 7-segment indication, serveral icons, indication of battery voltage, fuel level, temperature, rpm, speed km/h, hour counter (max. 99999,9h), service counter (max. 9999h), real time clock (adjustable)
LED-Indication:	3 LEDs, 2 of them can be supplied externally	9 or 10 LEDs, 6 to be supplied externally - with customised limit values, flasher right/left, battery, oil, gear oil pressure, water temperature, headlight, preheat, parking brake, gear oil temperature
Analogue inputs:	resistance, voltage	resistance, voltage, current
Options:	version for CAN (SAEJ1939, CAN open) data version for configuration via serial interface version with or without front push buttons at version with front push buttons a configuration and inquiry via push button is possible	version for CAN (SAEJ1939, CAN open) data version for configuration via serial interface version with or without front push buttons (808) version only without front push buttons (808.2) at version with front push buttons a configuration and inquiry via push button is possible
Operating voltage:	12, 24 V DC	12, 24 V DC
Current consumption:	max. 25mA	max. 200mA
Switching output:	FET 0.5A - optionally with relay output	FET 0.5A - optionally with relay output
Ambient temp.:	-40°C...85°C	-40°C...85°C
Stocking temp.:	-40°C...90°C	-40°C...90°C
Elect. connection:	Molex minifit 8-pole or 10-pole with lock	Molex minifit 8-pole or 10-pole with lock, optionally with waterproof AMP-connector
Fixing:	metallic clamp with 2 screws	metallic clamp with 2 screws
Data storage:	EEPROM	EEPROM
Protection class:	IP67 frontally, IP40 on the rear	IP67 frontally, IP 40 rear side – optionally IP67 on the rear
Vibrations:	EN 60068-2-34 (1g, 10-500Hz), SAE J1378 (20g, 10-80Hz)	EN 60068-2-34 (1g, 10-500Hz), SAE J1378 (20g, 10-80Hz)
Shock:	EN 60068-2-27 (30g, 18ms), EN 60068-2-29 (25g, 6ms) SAE J1378 (55g, 9-13ms)	EN 60068-2-27 (30g, 18ms), EN 60068-2-29 (25g, 6ms) SAE J1378 (55g, 9-13ms)
EMC:	EN 61000-6-2, EN55011	EN 61000-6-2, EN55011
Approvals:	CE	CE
Accessories:	rubber seal	rubber seal

Panels

Are you searching for better solutions? We solve it for you!

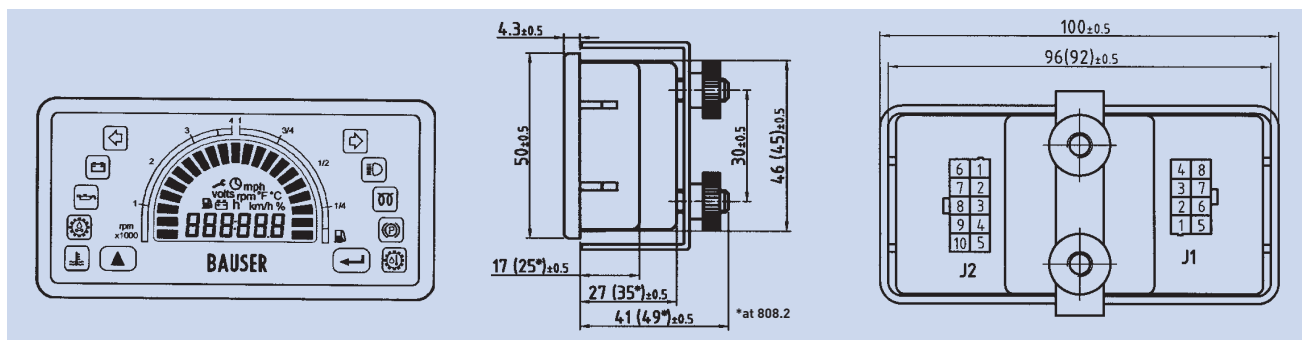
Drawings Type 806:



Configuration of PINs:

- | | |
|----------------------|--------------------------------|
| 1 = analogue input 1 | 6 = analogue input 2 |
| 2 = key switch + | 7 = release of configuration + |
| 3 = FET output | 8 = hour counter + |
| 4 = battery - | 9 = battery + |
| 5 = LED 2 - (option) | 10 = LED 3 - (option) |

Drawings Type 808, 808.2:



Configuration of PINs J1:

- | | |
|----------------------|----------------------|
| 1 = LED 6 - | 5 = battery - |
| 2 = LED 7 - | 6 = FET-output |
| 3 = LED 8 - | 7 = battery + |
| 4 = analogue input 1 | 8 = analogue input 2 |

Configuration of PINs J2:

- | | |
|------------------|--------------------------------|
| 1 = km/h + | 6 = CAN L (optionally) |
| 2 = key switch + | 7 = CAN H (optionally) |
| 3 = LED 3 - | 8 = release of configuration + |
| 4 = LED 4 - | 9 = Hour counter + / rpm + |
| 5 = LED 5 - | 10 = analogue input 3 |

BAUSER®

■ **BAUSER GmbH & Co.KG**

Julius-Bauser-Straße
72186 Empingen
Germany

Tel.: +49 (0) 74 85 -181-0

Fax: +49 (0) 74 85 -181-16

Internet: www.bauser-control.de

E-mail: mail@bauser-control.de

BAUSER®