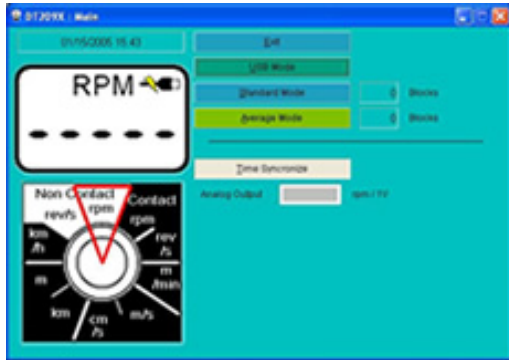


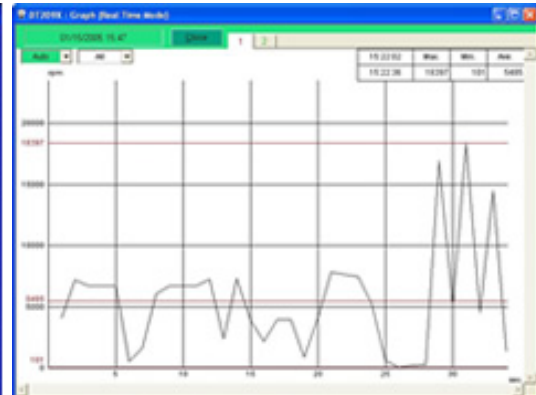
- Come with an application software. Data can be downloaded to PC with USB connection.
- A laser allows precise RPM measurement from 1.5 m.
- Large 5 digit LCD display.
- Hardy aluminum construction.
- Length and speed measurements available with a contact adapter.
- 3 kinds of measuring mode.
USB, Standard, Average mode
- Fulfilling memory feature
Standard mode: Total 24 blocks (1 block: 10 measuring data, final value, Max. value, Min. value, mean value)
Average mode: Total 30 blocks (1 block: final value, Max. value, Min. value, mean value)
USB mode: PC control, real time download.



Main Menu



Data download(USB mode)



Graph(USB mode)

Specifications

Model	DT-209X Non-contact/Contact tachometer
Measuring Mode	USB mode, Standard mode, Average mode
Measuring Range	6-99,999 rpm ±1 rpm: 6-8,300 rpm ±2 rpm: 8,301-25,000 rpm
Accuracy	±0.006 % of reading ±1 digit (or 2 rpm max.): 25,001-99,999 rpm
Display	5 digit 12mm high LCD RPM (on contact using adapter, included)
Measuring Units	for rate; YPM, mPM, FPM, IPM and Length: YRD, m, FT, IN use 6"cir. Wheel with contact adapter
USB communication	USB 1.1
Analog output	0 ~ + 1V/Full Range
Auto power off	5 minutes
Power supply	USB Cable disconnection 2 AA 1.5V Batteries USB Cable connection USB Bus power (Operate without the battery)
Memory	Standard Mode(24 blocks) Ten measurement point, final value, maximum value, minimum value, mean value, and measurement date Average Mode(30 blocks) Final value, maximum value, minimum value, mean value and measurement date
Display Update Time	1 second (typical)
Detection	Laser diode

System Contro;
 Over Range Indicator
 Low Battery Indicator
 Operating Temperature Range
 Construction
 Weight
 Dimensions

Single-chip C-MOS microprocessor
 Flashing numerals
 Flashing "LO BAT" display
 0-45°C
 Die-cast aluminum housing
 400g
 167.5×60×46mm

Accessories

Standard

Option

Reflective tape, 2 cone, 1 funnel, 6"cir. Wheel, Ext-shaft,
 2AA 1.5V Batteries
 Contact adapter, Carrying case, Software, USB connection
 cable
 Analog Cable

Dimensions

