

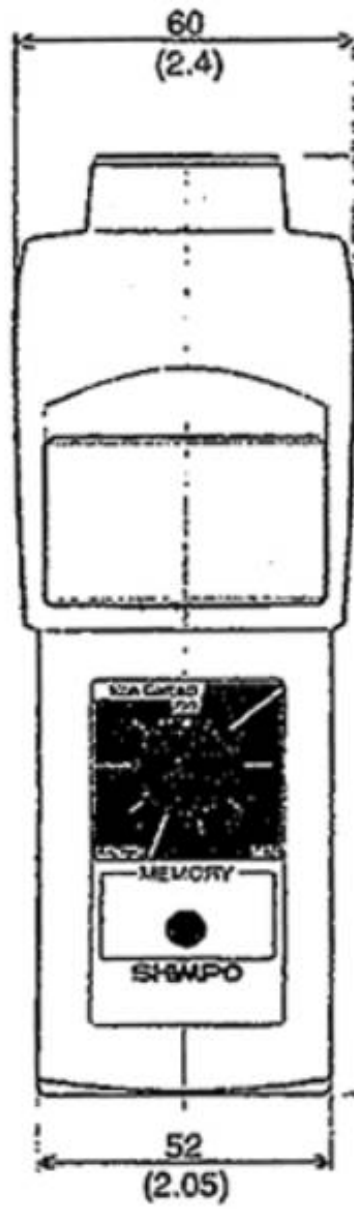
- Multi-mode capability measures RPM, mPM, YPM, FPM, IPM and total meters, yards, feet and inches.
- Large memory capacity allows up to 13 measurements to be stored in memory.
- Single chip microprocessor ensures reliability and low maintenance.
- Safely measures RPM (non-contact mode) from up to 1.5m away.
- Oversized 5-digit LCD display permits easy reading (DT-205L).
- Long battery life (up to 40 hours of continuous use(DT-205L).
- Rugged die-cast aluminum housing provides exceptional durability .
- Extended measuring range (6-99,999 rpm) covers wide range of applications.

Specifications

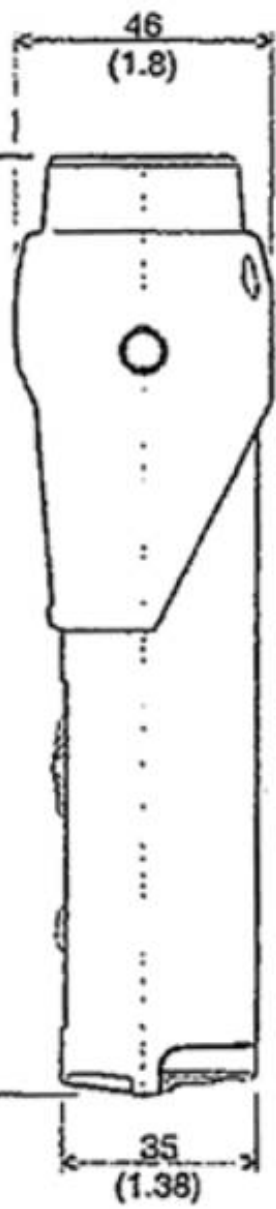
Model	DT-205L	DT-207L
Display Range	6 to 99,999 rpm	
Accuracy	±1 rpm: 6 to 8,300 rpm ±2 rpm: 8,300 to 25,000 rpm±0.006% of reading ±1 digit (or ±6 rpm max.): 25,000 to 99,999 rpm	
Display	5 digit 12mm high LCD RPM (on contact using adapter, included)	5 digit 10mm high LED
Measuring Units	For YPM, mPM, FPM, IPM and Length: YRD, m, FT and IN use 6" cir. wheel with Contact adapter	
Measuring Distance	1.5m maximum	
Memory System	13 reading are stored in memory and retained for 5 minutes (last, max., min. and 10 extra measurements)	
Detection	Laser diode	
System Control	Single chip C-MOS microprocessor	
Over Range Indicator	Flashing numerals	
Update Time	1 second(typical)	
Batteries Included	Size: 2AA 1.5V Life: Approx. 40 hrs	Size: 2AA 1.5V Life: Approx. 25 hrs
Low Voltage Indicator	Flashing "LO BAT" display	"B" display
Operating Temperature	0°C to 45°C	
Construction	Die-cast aluminum housing	
Weight	365g	
Dimensions	167×60×46mm	
Warranty	1 year	
Standard Accessories	Reflective tape, cone adapter, Funnel adapter, Extension shaft, carrying case, master wheel(6" cir.) and Contact adapter	

Dimensions

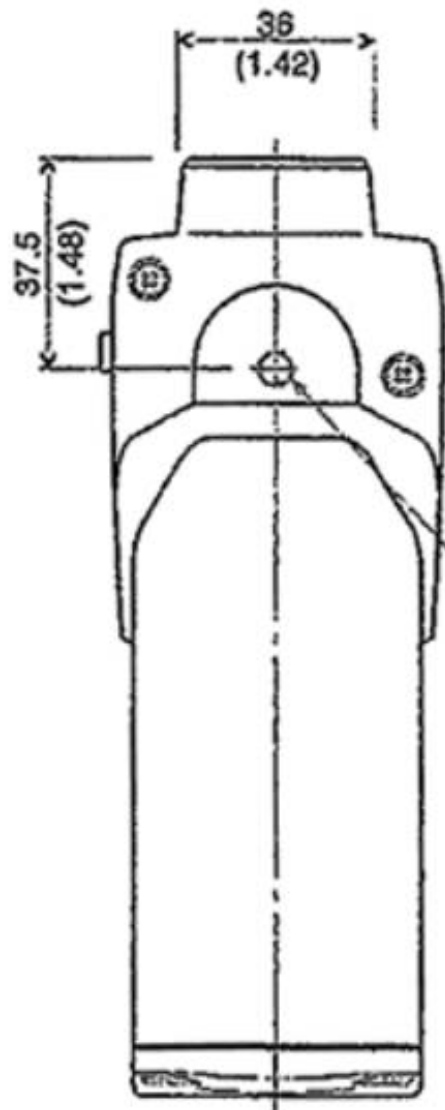
FRONT VIEW



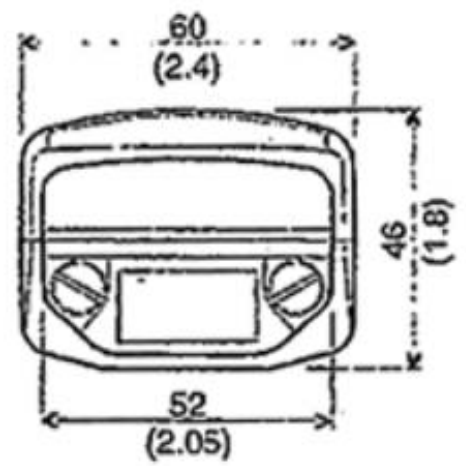
LEFT SIDE VIEW



REAR VIEW



BOTTOM VIEW



KEY: mm
(in)

CONTACT ADAPTER

