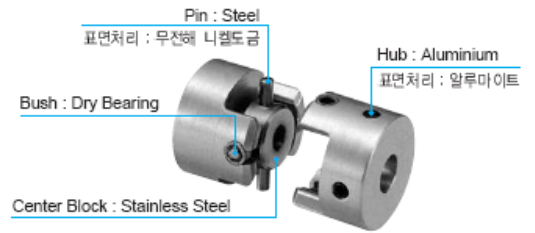


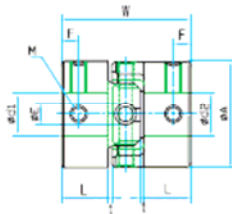
Structure & Material / 구조 및 재질



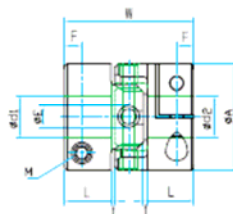
How to order product / 제품 주문방법

SCJ - 20	φ 6	×	φ 8
Product No. 제품번호	Shaft Dia 축경(d1)		Shaft Dia 축경(d2)

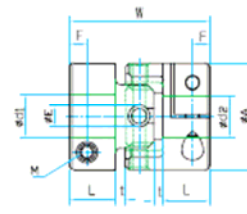
SCJ - ■■■ (SET SCREW TYPE)



SCJA - ■■■ C (CLAMP TYPE)



SCJB - ■■■ C (CLAMP TYPE)



Performance / 성능

제품번호 Product Number	상용 토크 Rated Torque (N·m)	최대 토크 Max Torque (N·m)	최대 회전수 Max. RPM (min ⁻¹)	관성 모멘트 Moment of inertia (kg·m ²)	비틀림 강성 Torsion Stiffness (N·m/rad)	편심 Parallel (mm)	편각 Angle (°)	질량 mass (g)
SCJA-120	0.15	0.3	6,000	1.0 × 10 ⁻⁷	110	0.3	3	4.5
SCJA-150	0.25	0.5	6,000	3.3 × 10 ⁻⁷	220	0.3	3	9
SCJA-200	0.5	1	6,000	1.2 × 10 ⁻⁶	350	0.5	3	19
SCJA-250	1	2	6,000	3.3 × 10 ⁻⁶	800	0.5	3	34
SCJA-320	2	4	5,000	1.1 × 10 ⁻⁵	1,000	0.5	3	72
SCJA-400	5	10	4,000	3.2 × 10 ⁻⁵	1,400	0.5	3	140
SCJB-120	0.15	0.3	6,000	1.0 × 10 ⁻⁷	100	0.3	7	4.5
SCJB-150	0.25	0.5	6,000	3.5 × 10 ⁻⁷	200	0.3	7	10
SCJB-200	0.5	1	5,000	1.3 × 10 ⁻⁶	300	0.5	7	20
SCJB-250	1	2	5,000	3.4 × 10 ⁻⁶	700	0.5	7	35
SCJB-320	2	4	4,500	1.2 × 10 ⁻⁵	950	0.5	7	75
SCJB-400	5	10	3,500	3.3 × 10 ⁻⁵	1,200	0.5	7	145
SCJ-12	0.15	0.3	6,000	1.0 × 10 ⁻⁷	100	0.3	3	4.5
SCJ-15	0.25	0.5	6,000	3.3 × 10 ⁻⁷	200	0.3	3	9
SCJ-20	0.5	1	6,000	1.3 × 10 ⁻⁶	450	0.5	3	20
SCJ-25	1	2	6,000	3.4 × 10 ⁻⁶	800	0.5	3	35
SCJ-32	2	4	5,000	1.2 × 10 ⁻⁵	1,000	0.5	3	75
SCJ-40	5	10	4,000	3.3 × 10 ⁻⁵	1,300	0.5	3	145

Standards & Standard Inner diameter / 규격 · 표준내경

제품번호 Product Number	A	L	W	t	E	F	M	표준 내경 (d ₁ , d ₂) Standard INNER Diameter (mm)												
								3	4	5	6	6.x	8	10	11	12	14	15		
SCJA-120	12.7	7.2	20.2	0.7	2	2.4	2	●	●	●										
SCJA-150	15	8	22.4	0.8	2.5	3	2.6	●	●	●	●									
SCJA-200	20	8	23.6	0.8	4	3	2.6	●	●	●	●	●								
SCJA-250	25	10.5	30.6	1.3	5	3.6	3		●	●	●	●	●							
SCJA-320	32	13.5	39	1.6	8	4.5	4			●	●	●	●	●						
SCJA-400	40	16	45.6	1.9	10	6	5				●	●	●	●	●	●				
SCJB-120	12.7	7.2	22.1	1.5	2	2.4	2	●	●	●										
SCJB-150	15	8	24.2	1.5	2.5	3	2.6	●	●	●	●									
SCJB-200	20	8	26.5	2.2	4	3	2.6	●	●	●	●	●								
SCJB-250	25	10.5	33.5	2.8	5	3.6	3		●	●	●	●	●							
SCJB-320	32	13.5	43	3.6	8	4.5	4			●	●	●	●	●						
SCJB-400	40	16	51	4.5	10	6	5				●	●	●	●	●	●				
SCJ-12	12.7	7.2	20.2	0.7	2	2.4	2.5	●	●	●										
SCJ-15	15	8	22.4	0.8	2.5	3.8	3	●	●	●	●									
SCJ-20	20	8	23.6	0.8	4	3.8	3	●	●	●	●	●								
SCJ-25	25	10.5	30.6	1.3	5	5	4		●	●	●	●	●							
SCJ-32	32	13.5	39	1.6	8	6.5	5			●	●	●	●	●						
SCJ-40	40	16	45.6	1.9	10	8	5				●	●	●	●	●	●				

□ 내경이 INCH TYPE도 있습니다. □ INNER diameter INCH type is also available. □ 내경이 비표준품도 있습니다. □ 내경이 KEY TYPE도 있습니다.